

Loops & Threads®

Needle Felting-Mushroom

Sku#773643



Time: 3 hours



SUPPLY LIST

Kit includes: Green Wool×1 White Wool×1 Red Wool×1 Cream Wool×2 Instructions

Additional supplies needed: felting Needle, scissors, thick foam block or sponge, silicone finger tip covers to protect fingers.

BEFORE YOU BEGIN

Before starting, read all the instructions and prepare the necessary tools. Wear silicone finger tip covers to avoid accidental injuries.

INSTRUCTIONS

1



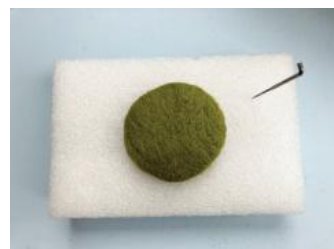
Grass: Take an appropriate amount of green wool and roll it into a ball. Poke into a grass shape using a needle.

2



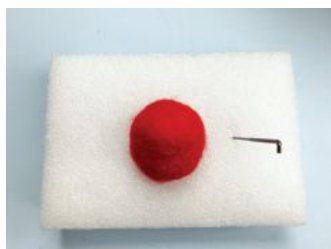
Place the green wool on the foam, starting from the outside of the coil, poke into the wool, and continue around the entire coil, poking it into a solid hemisphere.

3



Turn the wool over and repeat the poking steps (it might stick to the foam), and poke this side flat.

4



Mushroom cap: Take an appropriate amount of red wool and roll it into a ball, poke it into the shape of the mushroom cap.

5



Take a small amount of white wool and roll it by hand into different sized balls, and place them on the mushroom cap, using your needle to bring in the edges and form a circle.

6



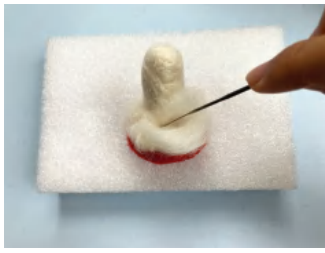
Mushroom Stem: Take an appropriate amount of cream wool and roll it into 1 inch thick cylinder.

7



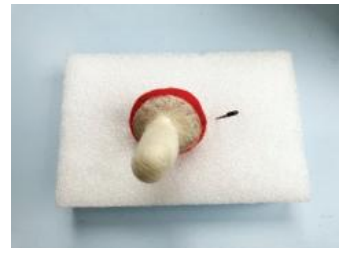
Place the mushroom stem on the foam, poke into the wool, and continue repeating the above steps while constantly adjusting the direction until the mushroom stem becomes firm.

8



Take a small amount of cream wool and poke it tightly between the mushroom stem and cap.

9



Poke the connecting part with the needle until they are firmly attached together.

10



Place the finished mushroom on top of the grass (making sure the grass is flat on the bottom), continue to poke the connection area between the mushroom stem and the grass until they are securely connected together.

11



Finish.



TIPS & TRICKS

1. Stab vertically to compress the wool.
2. Stab at 45 degree angle to attach 2 items together.
3. Stab horizontally or 180 degrees to blend 2 pieces together. Remember to leave some untied wool at the joined end so that the two pieces of wool can be tightly connected together.
4. The barbed needle compresses the wool fibers together. Stab the needle into the wool slowly. Ensure the needle goes through all layers of wool, but not too deep into the pad.
5. Change the side you're felting often to avoid felting into the pad.
6. If there is a lump, or the wool is not smooth, continue to stab the wool. When trying to form a shape, stab to compress the wool into the shape.
7. Use foam as a work surface for safety. Needles should always be straight up and down to avoid being bent or broken.
8. For safety, keep fingers away from needle points.

WARNINGS

CHOKING HAZARD.

Not suitable for children under 3 years of age due to small parts.

Finished product is not safe for under 3's as small parts pose a choking hazard. Keep away from children under 3 years.



SUPPORT CONTACT

Questions or comments: 833-201-5260