



7.5FT GLENDALE SPRUCE

Model #: TG76P5433D34

APPROXIMATE SETUP TIME

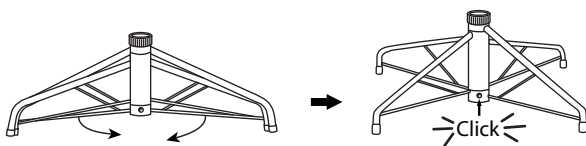


30 minutes

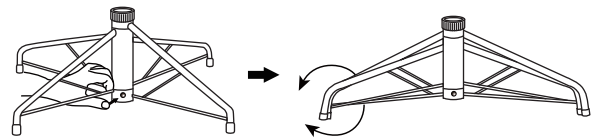


TREE ASSEMBLY INSTRUCTION

Fig. A - Tree Stand Assembly

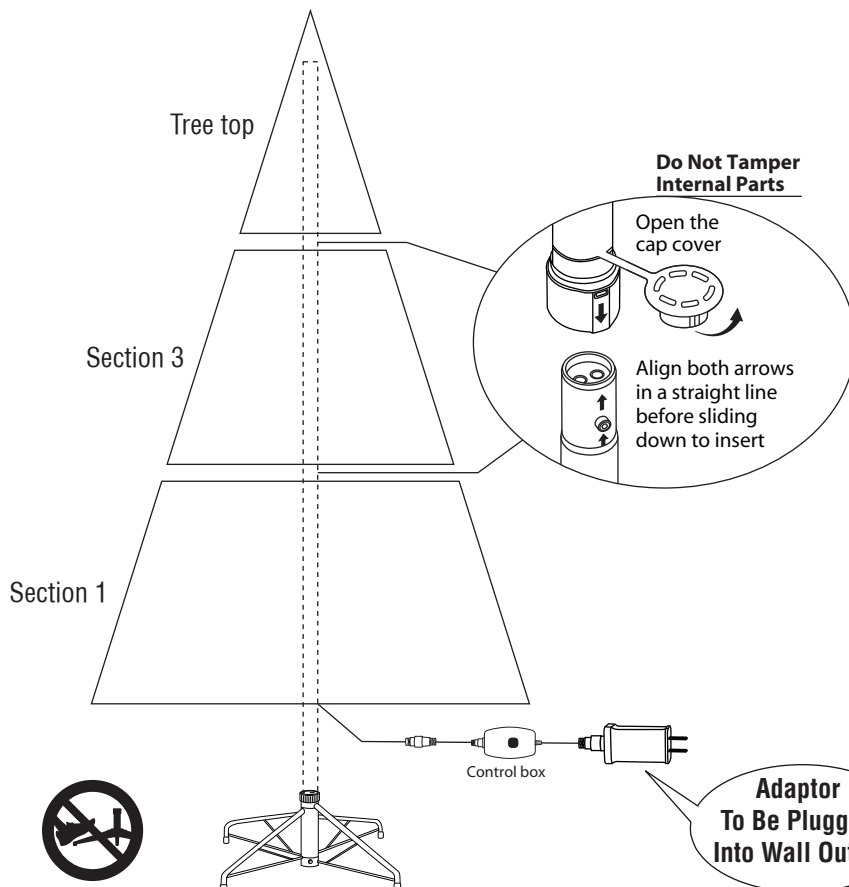


Pull apart the legs of the stand so that they are snapped into an x-shape, place the tree stand on a level surface.



To close the stand, press the metal button and fold the legs together.

Fig. B - Tree and Light Assembly



Electrical Rating For The Tree (For Indoor Use Only)

Input: AC 120V, 60Hz, 0.45A

Output: DC 29V, 0.9A

Controller: 0.9A

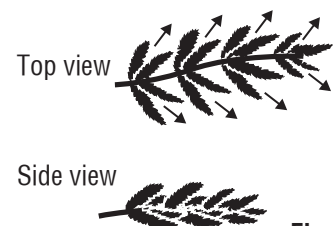


Fig. C

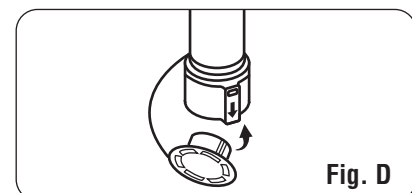


Fig. D

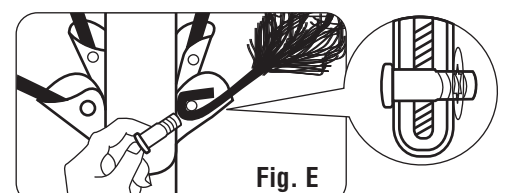


Fig. E

BEFORE YOU BEGIN

Congratulations on purchasing your new tree from Polygroup®! This tree comes with Quick Set® feature - allowing you to set up and light your tree easily! Carefully follow the instructions below on how to quickly and easily set up your new tree.

1. Before you start to assemble your tree, choose an appropriate location near a wall outlet.
2. Assemble the tree stand and place on a level surface.
3. Each tree section is numbered with a sticker. Please identify all sections before assembling.

INSTRUCTIONS

1. Assemble the tree from the bottom to the top. Start with the bottom section and remove protective cap before inserting into the assembled stand. Make sure the pole is firmly inserted and secured into the stand.
Note: Do not step on the tree stand legs during the setup. This may deform the tree stand and may result in an unbalanced tree.
2. Continue by inserting the upper tree section(s) to the lower section(s) until inserting the tree top.
3. Allow branches to fall into place or gently pull up and out. When adjusting branches, be sure that all wires are free of branch hinges.
4. Insert adaptor plug into the wall outlet. **(see Fig. B)**, your entire tree should now be lit.
5. Begin to shape the branches and tips working from the bottom to the top. Start with tips farthest from the pole and fan out one to the right, one to the left and one at the center of the main stem. **(See Fig. C)**
6. After shaping the entire tree following the previous step, slightly upsweep all branch tips for a uniform look. Shift branches to fill any gaps. Your Christmas tree is now complete and ready to be decorated.

STORAGE INSTRUCTIONS

1. Unplug adaptor from the wall outlet first and then remove all ornaments and decorations.
2. Disassemble the tree from the top to the bottom. Start with the tree top and gently lift straight up to remove from section below and fold all branches toward the pole.
3. Continue by gently lifting straight up each section(s) from the section below and fold all branches toward the pole until the bottom section is removed from the tree stand. Cover the protective cap on the poles to avoid damaging the internal parts. **(See Fig. D)**
4. Carefully place all tree sections into shipping box and tape it shut.
5. When not in use, please store your tree in a cool, dry place away from sunlight. Exposing your tree to excessive heat or humidity may damage your tree.

TIPS & TRICKS

For Pre-lit Trees, If The Tree Does Not Illuminate

1. Please check to make sure that all plugs are properly connected and adaptor is plugged into the wall outlet.
2. Turn the poles gently to ensure pole-to-pole connection is secured.
3. Check for loose connection between light string plugs and extension cords.

Loose Hinge Pin

1. Extra hinge pins are included for repairing the hinges. Place the branch into the slot of the bracket.
2. Insert a new hinge pin through the hole and secure using the retainer washer. **(See Fig. E)**

WARNING

1. Remove and immediately recycle or dispose of used batteries according to local regulations and keep away from children. Do NOT dispose of batteries in household trash or incinerate.
2. Even used batteries may cause severe injury or death.
3. Call a local poison control center for treatment information.
4. The compatible battery type is CR2032, and the nominal voltage is 3Vdc.
5. Non-rechargeable batteries are not to be recharged.
6. Do not force discharge, recharge, disassemble, heat above 60°C or incinerate. Doing so may result in injury due to venting, leakage or explosion resulting in chemical burns.
7. Ensure the batteries are installed correctly according to polarity (+ and -).
8. Do not mix old and new batteries, different brands or types of batteries, such as alkaline, carbon-zinc, or rechargeable batteries.
9. Remove and immediately recycle or dispose of batteries from equipment not used for an extended period of time according to local regulations.
10. Always completely secure the battery compartment. If the battery compartment does not close securely, stop using the product, remove the batteries, and keep them away from children.



This symbol marked on the product indicates "Warning: contains coin battery".

WARNING

- **INGESTION HAZARD:** This product contains a button cell or coin battery.
- **DEATH** or serious injury can occur if ingested.
- A swallowed button cell or coin battery can cause **Internal Chemical Burns** in as little as **2 hours**.
- **KEEP** new and used batteries **OUT OF REACH of CHILDREN**
- **Seek immediate medical attention** if a battery is suspected to be swallowed or inserted inside any part of the body.



WARNING

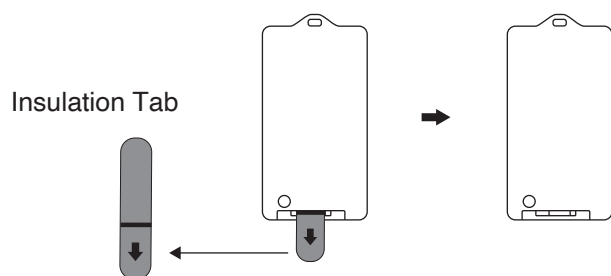
1. To reduce the risk of fire and electric shock:
 - Use only the power supply that was provided with this product. Using a different adapter will damage the lights and may cause fire, or electrical shock hazards.
 - Do not install on trees having needles, leaves or branch covering of metal or materials which look like metal.
 - Do not mount or support strings in a manner that can cut or damage wire insulation.
2. The controller and remote controller (if included) can only be used with this product.
3. This is an electric product-not a toy! To avoid risk of fire, burns, personal injury and electric shock it should not be played with or placed where small children and pets can reach it.
4. Ensure the ladder is securely fixed and is not slippery.
Be cautious when climbing up and down the ladder.



Be cautious when using ladder to set up tall trees

REMOTE CONTROL INSTRUCTIONS

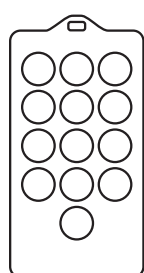
Remove the insulation tab of the remote control.



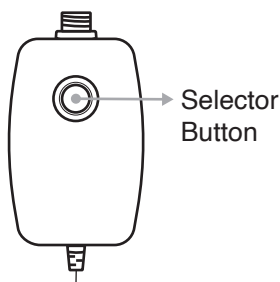
HOW TO USE THE LIGHT CONTROLLER & REMOTE CONTROL

On the Remote Control, simply press the button to choose the light effect you want.

On the Light Control, press the selector button to browse among:



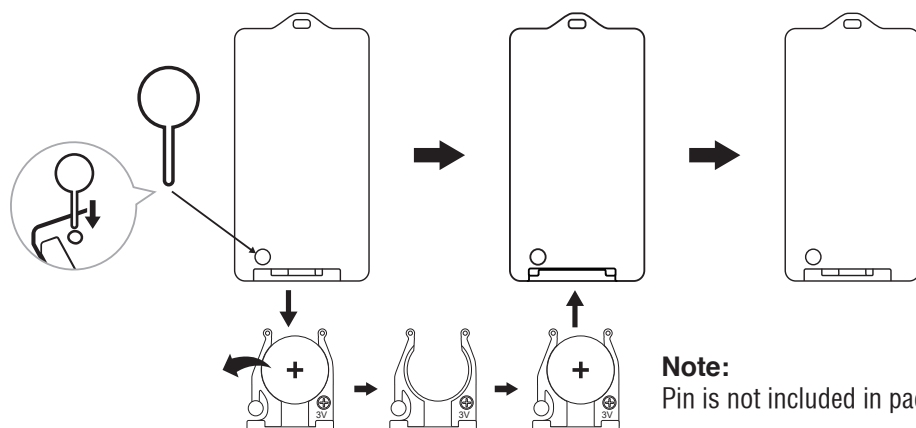
Remote Control



Light Controller

Selector button for light functions:

- | | |
|---------------------|----------------------------------|
| (1) Combination | (7) Color Fading |
| (2) Clear Steady | (8) Clear & Color Alternating |
| (3) Color Steady | (9) Clear & Color Fast Blinking |
| (4) Clear Twinkling | (10) Clear & Color Slow Blinking |
| (5) Color Twinkling | (11) Clear & Color Fading |
| (6) Clear Fading | (12) Off |



Note:
Pin is not included in package.

Demo Mode:

NOTE: This tree offers a Demo Mode. In this mode the light effects are displayed one by one in sequence until another light function is selected. This temporary light effect will last for 15 seconds before returning to Demo Mode.

To Activate DEMO mode:

1. Using the Light Controller - Press and hold the selector button for 10 seconds.
2. The **clear lights will blink 3 times**, indicating that **DEMO mode is ON**.
3. The tree is now in demo mode.

To Deactivate DEMO mode:

1. Using the Light Controller - Press and hold the selector button for 10 seconds.
2. The **multicolor lights will blink 5 times**, indicating that **DEMO mode is OFF**.
3. The tree is now in normal mode.

Timer Function:

- a. To turn on the Timer function, press the "Timer" button on the remote control once. The tree lights will flash 2 times, indicating the Timer function is activated. The lights will stay ON for 6 hours and then OFF for 18 hours as a cycle until the Timer Function is turned off.
- b. To turn off the Timer function, press the "Timer" button again. The tree lights will flash 4 times, indicating the Timer function is deactivated.

SPARE PARTS

Each tree includes hinge pins/washers.

If extra parts are needed, please contact our customer service center.

CUSTOMER SERVICE FOR CHRISTMAS TREES

For any questions, assistance, or missing parts, Do Not Return To Place Of Purchase. Contact us at (888) 919-0070 or visit our website at polygroupstore.com. One of our customer service representatives will be happy to assist you.

Tree ID#: _____

Customer Name: _____

Tree UPC#: _____

Address (No P.O. Boxes): _____

Store Purchased: _____

City & State: _____

Specify Problem: _____

Zip Code: _____

Day Phone: _____

Date Purchased: _____

TREE ID# IS LOCATED ON END PANEL OF BOX. TREE ID# IS REQUIRED WHEN REQUESTING REPLACEMENT PARTS.

LIMITED WARRANTY

This Christmas Tree is subject to the following warranty, with warranty service provided by Polygroup North America, Inc. (hereinafter "Polygroup").

Polygroup is pleased to offer warranty for the repair or replacement of products for three (3) years against manufacturer defects on parts from the date of purchase. The provisions of this Limited Warranty only apply to the original purchaser and who purchased from an authorized Polygroup seller. Please keep your original store sales receipt. This proof of purchase will be required and must accompany warranty claims to Polygroup or its designated agents. This Limited Warranty will not apply to modified or repaired products, unless authorized by Polygroup in writing; use for commercial purposes; use the product in contravention of the instructions with regards to set-up and use; or to products in which non-Polygroup parts or accessories were substituted; or use of the product in contravention of the product's instructions; or when improper voltage was used; or if the product was abused, or harmed through accident or negligence. This Limited Warranty does not cover consequential damages, including, but not limited to, labor time or costs, normal wear-and-tear; nor to acts of God, nor to damage to any other products or property.

In no event shall Polygroup, its authorized agents, related entities, or employees be liable to the buyer or any other party for direct or consequential damages. This limitation, in part or in full, may not apply to you, if the jurisdiction in which the claim arose does not allow this limitation.

This Limited Warranty is not extended to close-outs, factory seconds, or resold products, such as garage sales or auctions, or purchases from non-authorized sellers of Polygroup products. This Warranty also does not apply to online vendors or any other sellers who did not purchase the products from a Polygroup company, whether the product has been used or not prior to being sold to you. Any issues with items purchased from these types of vendors/sellers will need to be addressed directly with them.