

Tape to Heart Pt. 1 on this side

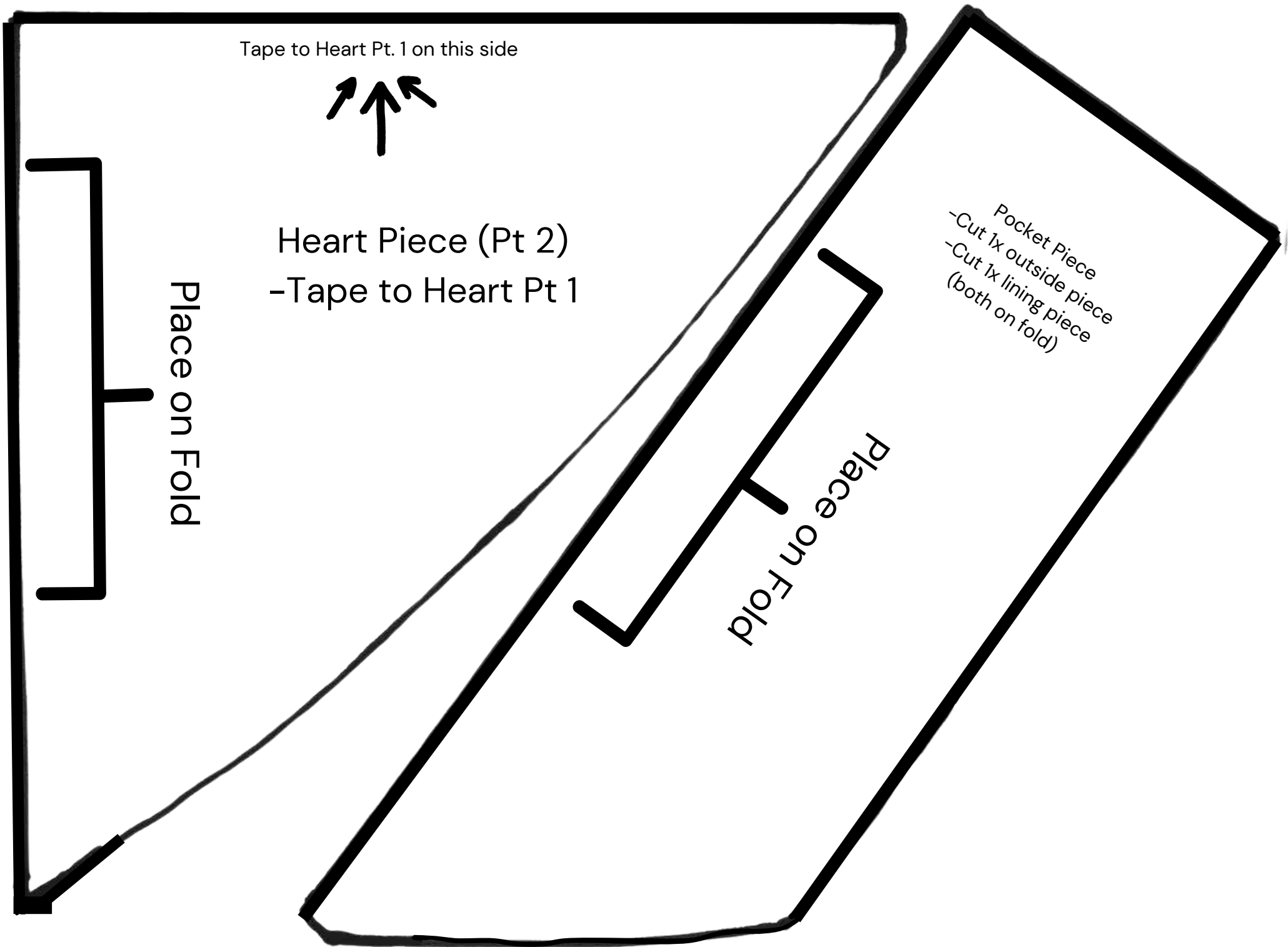


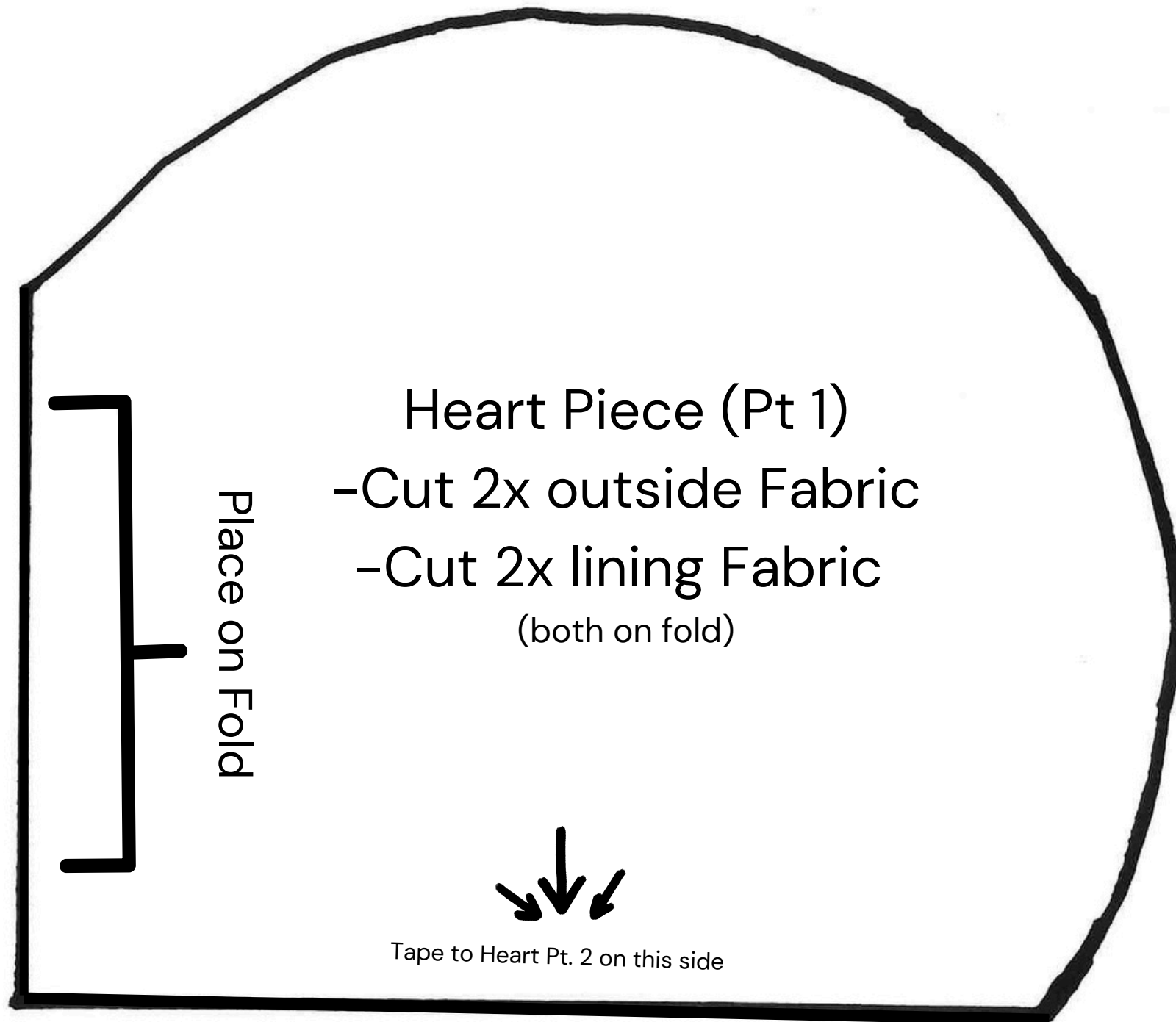
Heart Piece (Pt 2)
-Tape to Heart Pt 1

Place on Fold

Pocket Piece
-Cut 1x outside piece
-Cut 1x lining piece
(both on fold)

Place on Fold





Heart Piece (Pt 1)

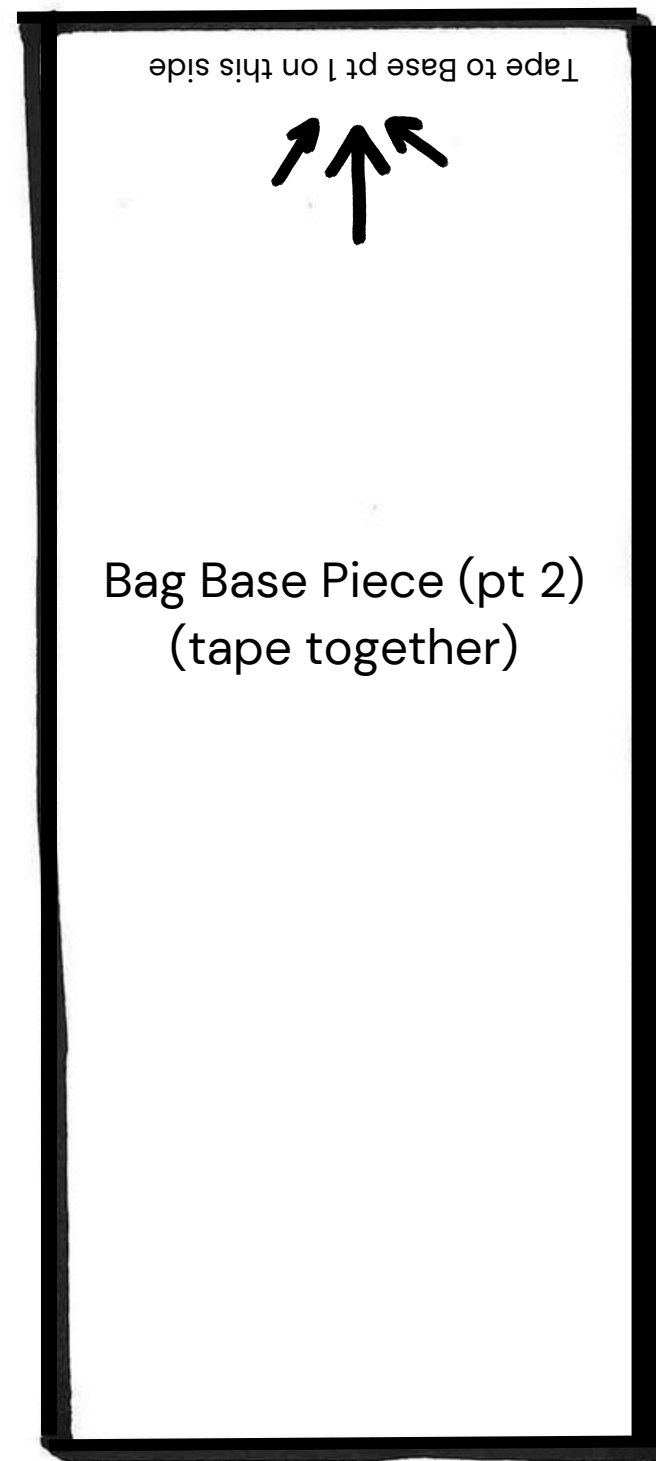
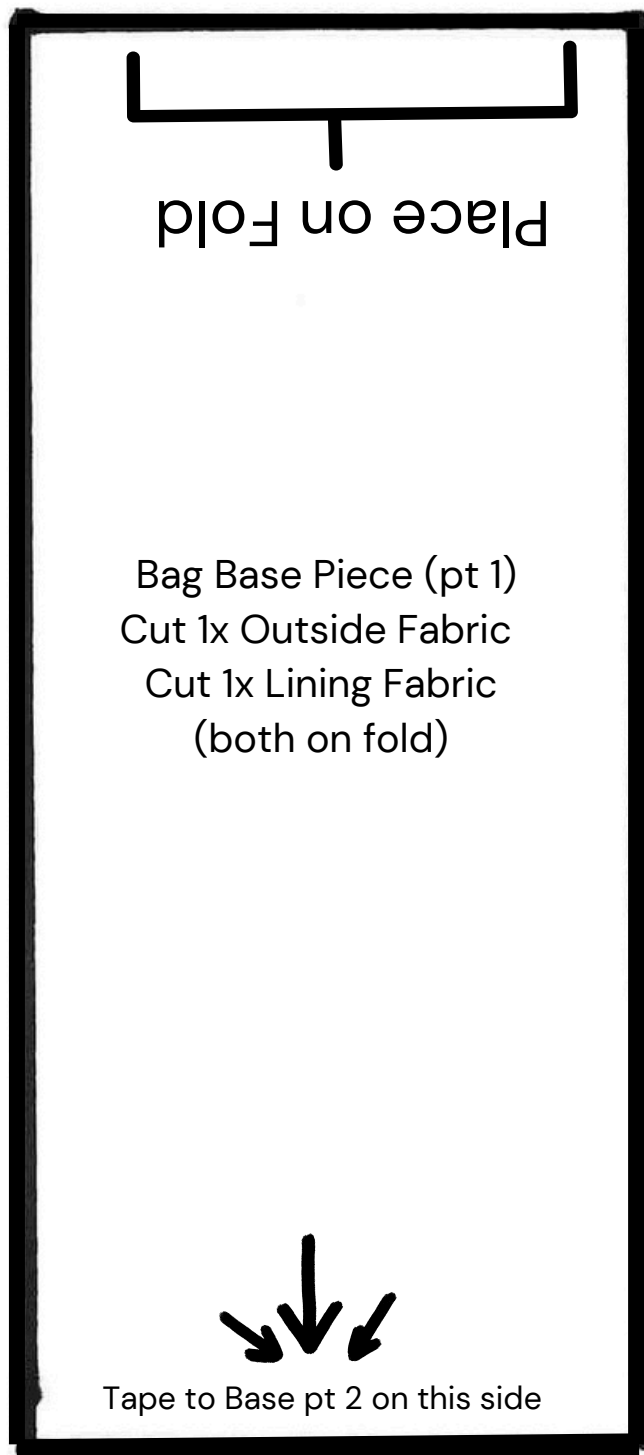
- Cut 2x outside Fabric

- Cut 2x lining Fabric

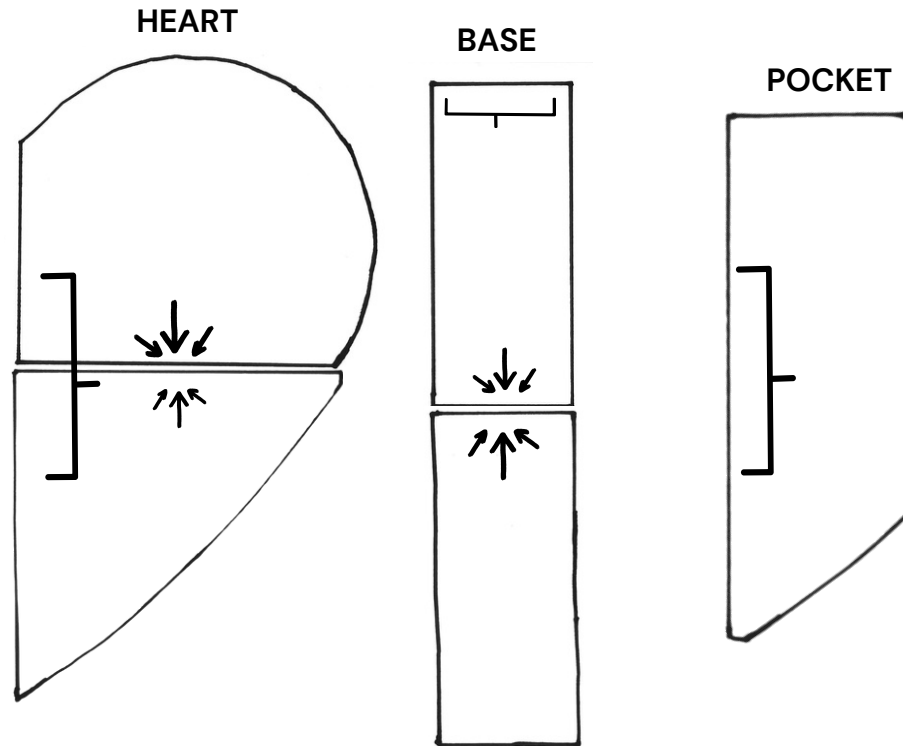
(both on fold)



Tape to Heart Pt. 2 on this side



PATTERN KEY + Project Details

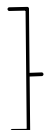


- 1) HEART: Cut 2 x heart shape out of lining fabric and 2x heart shape out of canvas/thick outside fabric
- 2) BASE: Cut 1x base of lining fabric and 1x canvas/thick outside fabric
- 3) POCKET: Cut 1x pocket lining fabric and 1x canvas/thick outside fabric



BAG STRAPS: CUT 2x CANVAS/COTTON Bag Strap Fabric at 45" EACH

 = tape line to combine pattern pieces

 = Fold side of fabric