

Michael's®

Made by you™

Flowing Crystal Bracelet Stackers



John Deed
ESTABLISHED 1954

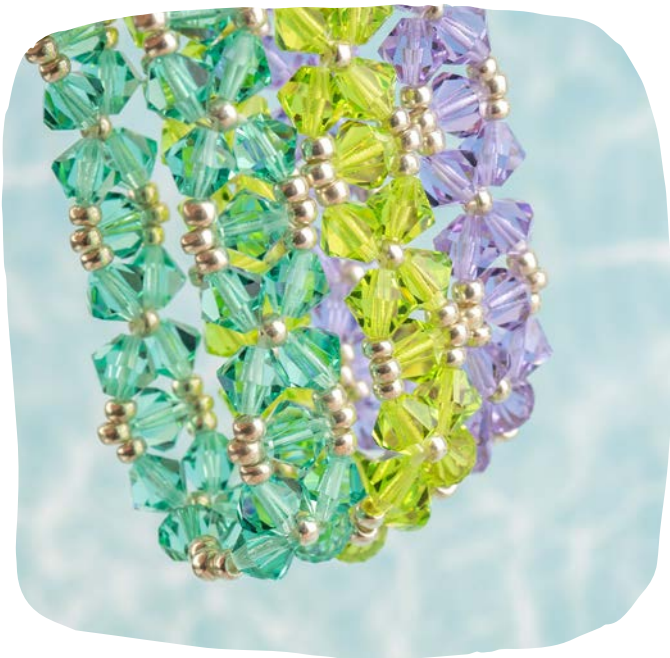
What You'll Need

6mm Bicone Czech Crystal, Lime, SKU 10719467
6mm Bicone Czech Crystal, Violet, SKU 10719505
6mm Bicone Czech Crystal, Aqua Sea, SKU 10719479
Size 8/0 Czech Seed Beads, Metallic Silver, SKU 10549084

Wildfire .006, Frost, SKU 10104818
Size #10 Hard Beading Needle, SKU 10332394

15mm Sterling Silver Toggles, SKU 10698300
Precision Scissors, SKU 10591717
Beading Mat, SKU 10348546

Beginner Bead Weaving
1 Hour Jewelry Making Event



Share your designs with us!

#JohnBead

#MakeItWithMichaels

[Join the John Bead Facebook Group!](#)

John Bead
ESTABLISHED 1954

Turn a strand of gorgeous Czech crystal into a stunning bracelet! Make three for a stackable style.

Abbreviations used in this text:

S8 - Size 8/0 Czech Seed Bead

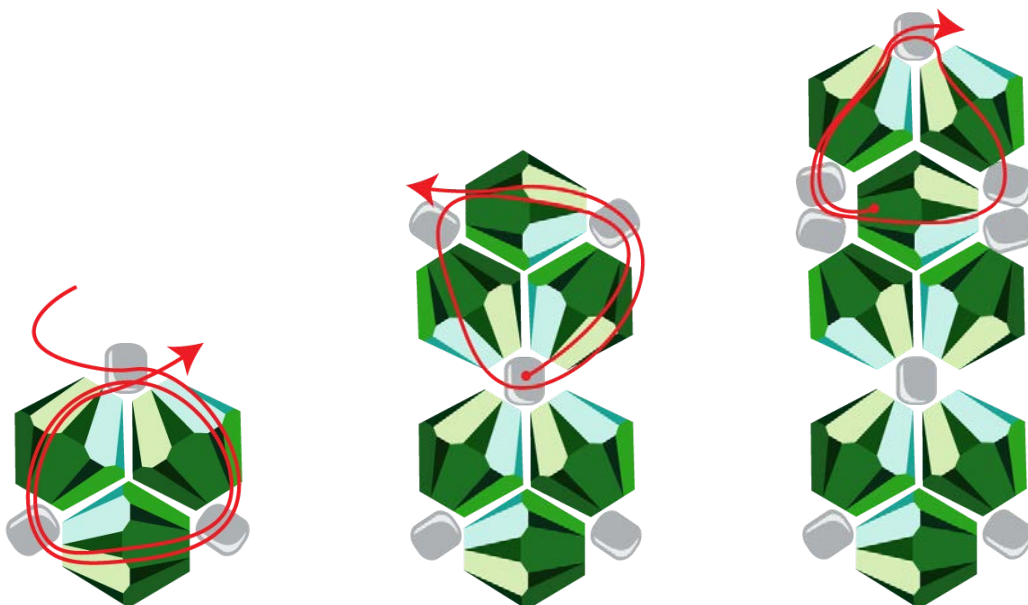
B6 - 6mm Czech Bicone

Step 1

Cut a wingspan of beading thread. Leave a 15-inch tail. Thread a size #10 hard beading needle. (String (1)S8 and (1)B6) three times. Go back through the first S8 and pull tight to form a ring. Weave around one complete time to reinforce. Leave the tail thread exiting from the S8. We will use it in Step 5.

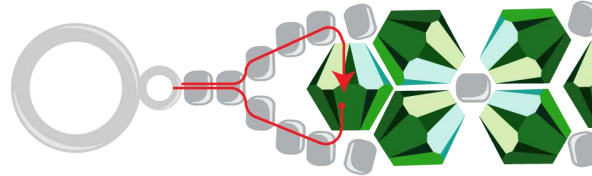
Step 2

With your thread exiting from the S8, (string (1)B6, (1)S8) twice, plus (1)B6. Go back through the S8 you're exiting. Weave around one full rotation to reinforce, then weave through the next B6, S8, B6. (String (1)S8, (1)B6) twice, plus (1)S8. Go back through the B6 you're exiting. Reinforce around.



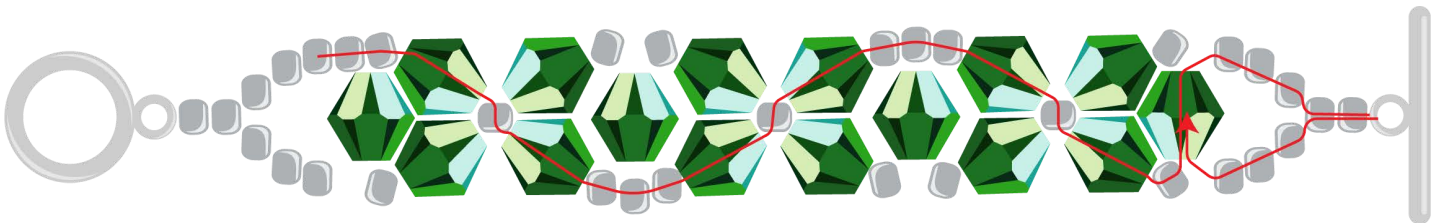
Step 3

Repeat Step 1 and 2 to desired length. End with a segment where the B6 is the ending bead. Exit from that B6 and string (5)S8, the toggle clasp, and then go back through the last (2)S8. Pull this tight. String (3)S8. Go through the bicone through the opposite side. Reinforce this connection with the clasp.



Step 4

On your last pass through the (3)S8 reinforcing the clasp, instead of going back through the B6, string (1)S8 and go through the next S8. Continue through the adjoining B6, center S8, next B6 (you'll have crossed sides), and exit from that S8. String (1)S8 and go through the next S8. Repeat this stitch path, crossing sides back and forth adding (1)S8 in between each of the S8 pairs that run the sides of the bracelet. When you reach the end, repeat Step 2 to attach the clasp on the other side.



Step 5

After attaching and reinforcing the clasp, weave back through the bracelet to add (1)S8 in between each of the two S8 (red path). Reinforce the Step 3 side clasp once more, and add the S8 needed (see black arrow). Use the tail thread on the starting side to add its connecting S8 from the clasp on both sides (blue arrows and path).

