

STRUNG JEWELRY FUNDAMENTALS

by Meredith Roddy

Don't be overwhelmed walking into the Beading Aisle! Learn what the must have products are and how to put them together. You'll be on your way to making beautiful, professional jewelry in no time!



Materials:

- Beadalon® 0.46mm Bright 19 Strand Bead Stringing Wire - Item # 10352475
- Wire Guards by Bead Landing™ - Item # 10697674
- Assorted Metal Crimp Tubes, 600ct. by Bead Landing™ - Item # 10697731
- Findings Mix by Bead Landing™, 100ct. - Item # 10151201
- Beadalon® Standard Crimper Tool - Item # 10332396
- Beadalon® Nipper Tool - Item # 10302215
- Jewelry Pliers Tool Set by Bead Landing™ - Item # 10334538
- Aqua & Copper Faceted Glass Round Beads, 8mm by Bead Landing™ - Item # 1040167
- John Bead Czech Glass Seed Beads Mix, 6/0 - Item # 10627186

Instructions:

Step 1 – Choose your wire strand count

- 49 Strand is the most flexible, the most durable, and the most supple.
- 19 Strand is the perfect combination of strength, flexibility, and price.
- 7 Strand is strong, will hold its shape well, and is economically priced.

Step 2 – Choose your wire diameter:

- Use the largest diameter wire possible that will pass through the smallest bead hole in your design.

Step 3 – Choose your Crimp Beads/Tubes and Corresponding Crimp Tool

- Look at your wire spool and it will indicate what size crimp bead or crimp tube to use.

Step 4 - Choose your Clasp

- There are a variety of clasps to choose from. An easy one to start with is a Lobster Claw Clasp or a Toggle Clasp.

Step 5 – Consider using Wire Guardians and Crimp Covers for a more professional look

Step 6 - String your design

Step 7 - Finish your design by crimping each end



Feed one Crimp Bead onto the Beadalon wire, then loop it through a Clasp and back through the Crimp. Be sure wires are side by side, not crossed.



Place the crimp in the OUTER jaw of the Crimp Tool, make one firm compression. This will shape the Crimp into an oval, keep the wires parallel.



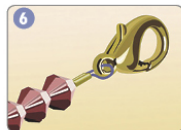
Place the Crimp Bead into the crescent-shaped groove (inner jaw) of the Crimp Tool. Make one firm compression.



Place the Crimp into the tool's semi-circle groove (outer jaw), turn it 90° and make another compression until the Crimp Bead is nicely rounded.



String the first bead, then cut the excess wire with the Beadalon Flush Cutter.



String the remaining beads and repeat steps 1, 2, and 3 on the opposite end to attach the other side of the clasp to complete the design.

CRIMP-WIRE-TOOL GUIDE

Crimp Bead Size	Use with Wire/Cord Diam.	Use with Crimp Tool	Tool Part #
#0	0.25 mm - 0.33 mm (.010" - .013")	Micro	JTCRIMP2
#1	0.25 mm - 0.53 mm (.010" - .021")	Standard	JTCRIMP1 & 5
#2	0.60 mm - 0.66 mm (.024" - .026")	Standard	JTCRIMP1 & 5
#3	0.60 mm - 0.91 mm (.024" - .036")	Mighty	JTCRIMP3

Crimp Tube Size	Use with Wire/Cord Diam.	Use with Crimp Tool	Tool Part #
#1	0.25 mm - 0.33 mm (.010" - .013")	Micro	JTCRIMP2
#2	0.33 mm - 0.61 mm (.013" - .024")	Standard	JTCRIMP1 & 5
#3	0.60 mm - 0.66 mm (.024" - .026")	Standard	JTCRIMP1 & 5
#4	0.66 mm - 0.91 mm (.026" - .036")	Mighty	JTCRIMP3