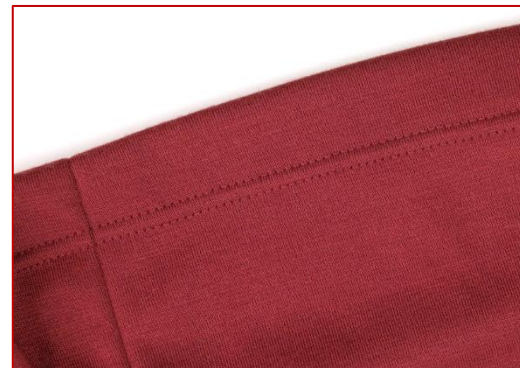


SINGER® How To's

By Soni Grint
Singer Educator



Did you know there is more than one way to create a seam in a project? Also, what type of hem will be the best for your fabric and application? This How To class will show you ways to make your projects more professional with specialty seams and hem styles that will elevate your finished product.

SKILL LEVEL: ■ □ □ □

Shopping List

Everything you need to complete this project in one place. Use this convenient checklist to ensure you have all required materials in your sewing room or take it with you while you shop for supplies.

PROJECT SUPPLIES for Cover:

- Singer sewing machine
- Singer Serger
- Singer Sewing Guage 6" # 181143355386216479

Optional accessories for ease of use

- Singer Sewing Presser foot kit # D756633S (Includes Blind Hem, Overcast and Rolled Hem feet, Twin Needle plus more))
- Singer Quilting Presser foot kit # D756640S (Includes 1/4" piecing foot plus more)
- Singer Garment Sewing Presser foot kit # D756641S (includes Sew Easy and Rolled Hem feet plus more)
- Singer Rolled Hem Presser foot # D756644S
- Singer Sew Easy foot # 10653389
- Singer Twin Stretch machine needle # D572776S

Seams

Traditional seam with edge finish – Most common type of seam; use 5/8" seam allowance for garment sewing and most projects; use 1/4" seam allowance for quilting; use 1/2" seam allowance for home dec and costuming; finish fabric edges usually before making the seam

Fabric: Most fabric types, woven or stretch, and weights, light, medium, heavy

Seam and Overcast (Sewing machine) – Create a seam and add a finishing element in one step; if using a 1/2" seam or larger, trim the excess fabric to the finish

Fabric: Most fabric types and weights, especially good for knits

Seam and Overcast (Serger) – Create a seam, add a finishing element, and trim excess fabric all in one step

Fabric: Most fabric types and weights, especially good for knits

Flat felled Seam – Strong seam that is finished on both front and back; use for trouser seams and projects that need to be seen on both the front and back

Fabric: Medium to Heavy woven, outdoor nylon fabrics

French Seam – specialty, encased seam; usually for high end garments

Fabric: Medium to Light woven; sheer fabrics

Hems

Straight stitch hem – Use when it is OK to see the stitching; finish the turned-up seam edge

Fabric: Most fabric types, woven or stretch, and weights, light, medium, heavy

Blind Hem – Use when the hem needs to be concealed; finish the turned-up seam edge; looks most like a hand sewn hem

Fabric: Medium woven and some stable knits; not acceptable for light fabrics and most knits

Twin Needle Hem – Professional hem, especially for t-shirts

Fabric: Medium to light woven or knits

Rolled Hem (sewing machine) – Professional shirt tail hem for dress shirts and napkins

Fabric: Medium to light woven

Rolled Edge (serger) – Professional edge, similar to those on napkins or tablecloths

Fabric: Medium to light woven, some knits
