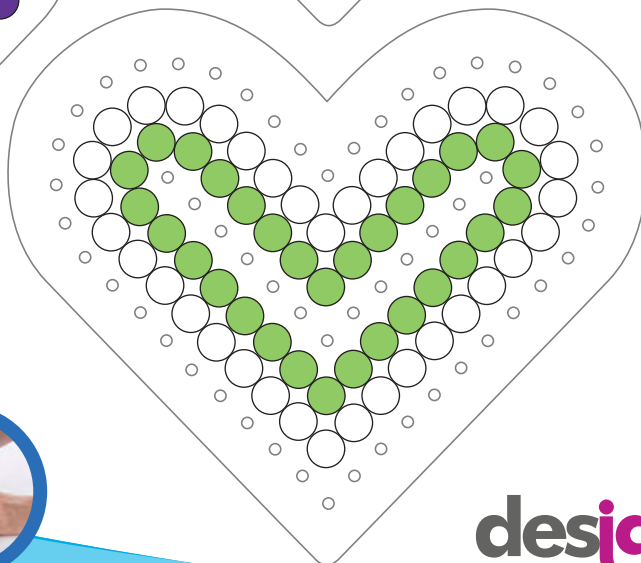
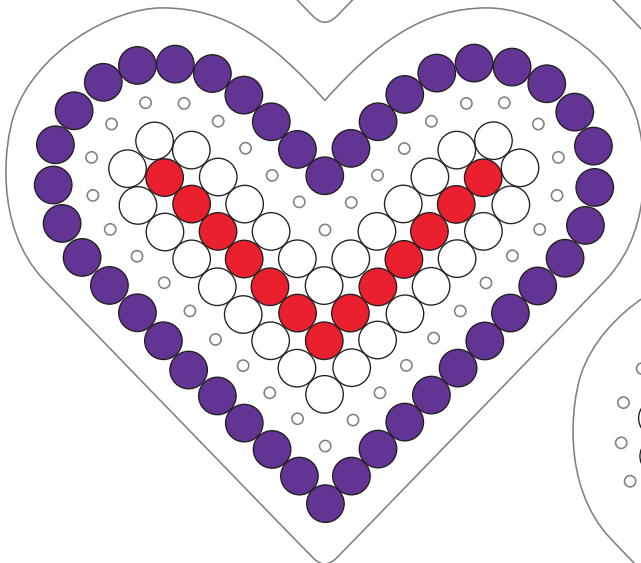
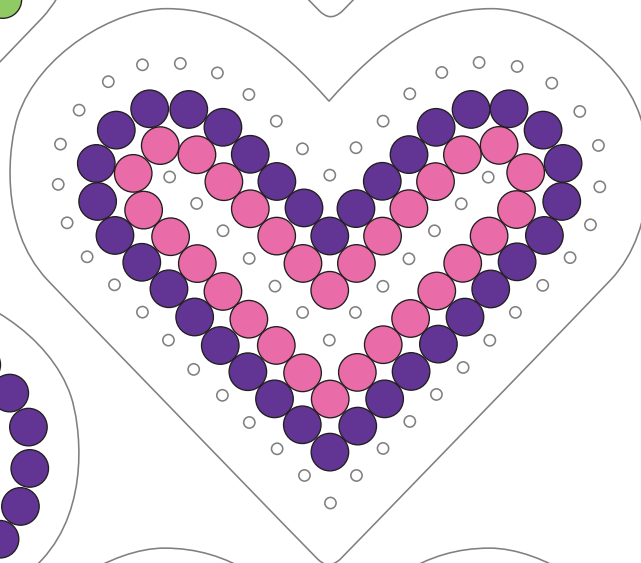
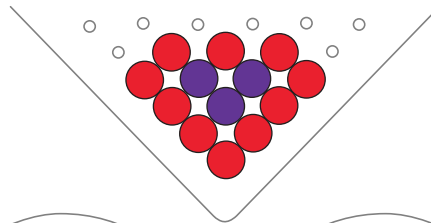
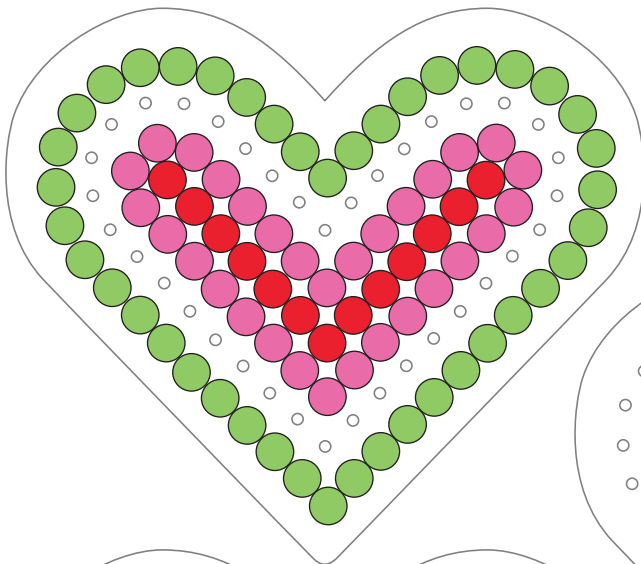


Michael's

perler

Let's Make a Valentine Mobile!



TIP: It's easier to sort your bead colors BEFORE class begins.

color key

- 36 red
- 81 purple
- 72 kiwi lime
- 60 pink
- 66 white

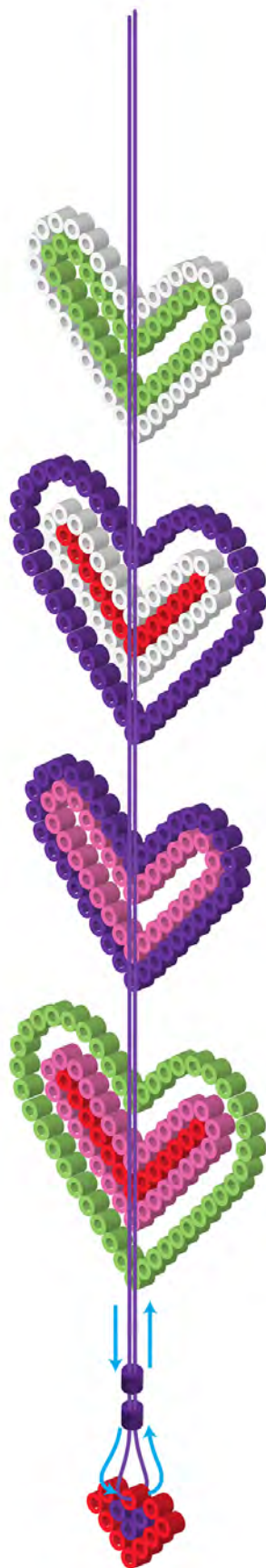


design group

perler.com

Michael's perler

ASSEMBLY: Using the 36" length of matching string, feed it through the smallest heart and two purple beads as shown. Glue the remaining hearts to the string.



design group

perler.com