

SINGER® PROJECTS

Turkey Silverware Holder



Add a personalized touch to your Thanksgiving place setting with these turkey silverware holders. This is a great opportunity for the older children in your life to create & sew with you.

PROJECT SKILL LEVEL: ■■■□□

Shopping List

Everything you need to complete this project in one place. Use this convenient checklist to ensure you have all required materials in your sewing room or take it with you while you shop for supplies.

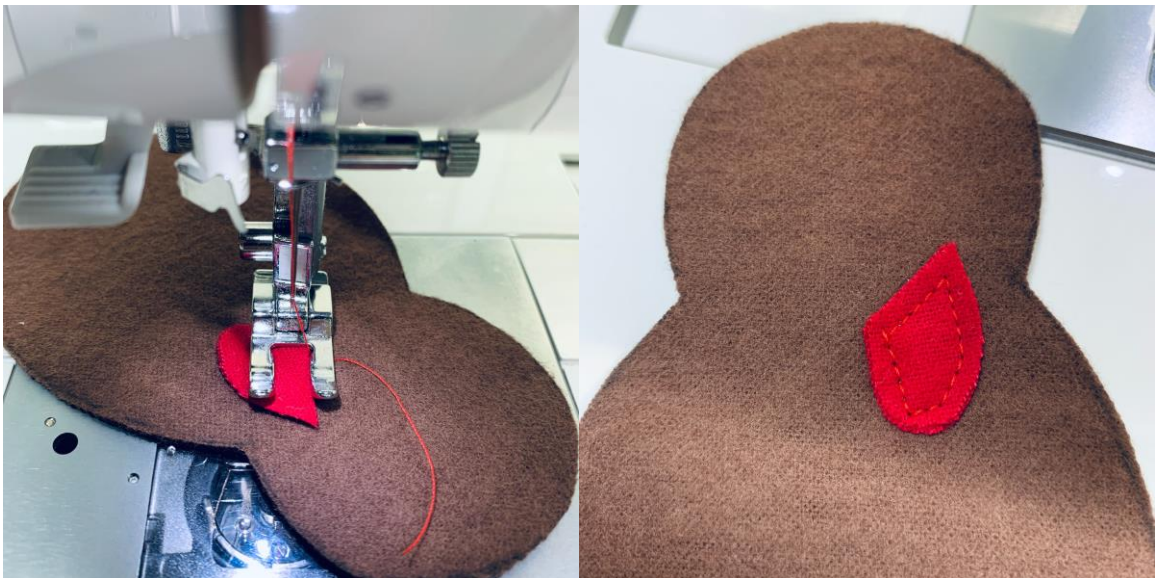
- Singer® Sewing Machine
- Flannel or felt for the turkey pieces – if using flannel, you will want to use a double layer to provide stability
 - Red flannel or felt for the largest feather section and wattle
 - Orange flannel or felt for the smaller feather section
 - Medium to Dark Brown flannel or felt for turkey body
 - Yellow flannel or felt for the turkey legs and beak
 - Light brown for the turkey wings
- Coordinating sewing thread (red, orange, brown & yellow)
- Singer® Open Toe Foot Presser Foot
- Pinking scissors
- SINGER® Iron
- SINGER® Universal Needles
- Fusible Web
- Hand sewing needle
- Provided pattern pieces

Project Steps

1. Cut out provided pattern pieces.
2. Cut the coordinating pattern pieces with your choice of matching flannel. Use 2 pieces of flannel to have a “pretty” looking back & to give a little more stability (or use 1 layer of felt) We used pinking scissors to cut the turkey wings to give more dimension.



3. Thread your machine with red thread. While using the Singer® Open Toe Foot Presser Foot, sew down the wattle to the brown that creates the turkey body.





ORIGINAL SINCE 1851.

4. Thread your machine with yellow thread & sew down the beak in the same manner.



5. With the yellow thread on your machine use a reinforced stitch sew accent stitches to the turkey feet.





ORIGINAL SINCE 1851.

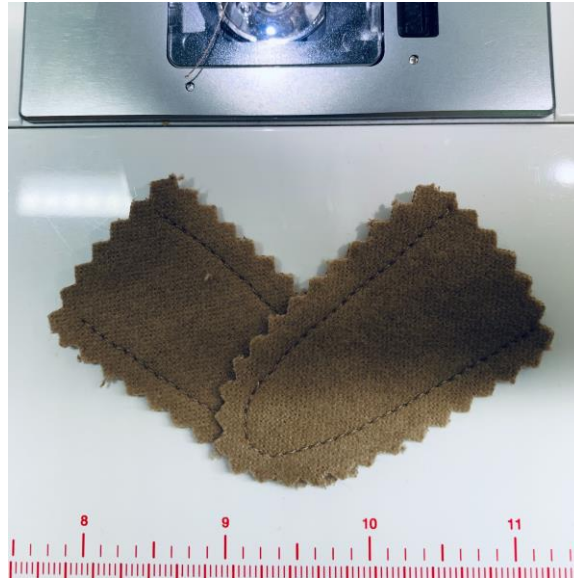
6. Add eyes above the beak. If your machine has decorative stitches, use a circle stitch. You can also use a tight zig zag or if you prefer you can sew the eyes by hand.



7. Thread your machine with brown thread & sew around the curve of the turkey wings.



8. Overlap the sewn turkey wings so that they are naturally crossed.



9. Using a zigzag stitch, sew 1/2" across the overlap of the turkey wings to connect them.



10. Taking the one piece of the largest feather section line up the second largest feather section along the bottom.



11. Thread your machine with orange thread & sew around the second largest feather section.



12. Line up the turkey feet at the bottom of the feather section & pin in place.



13. Place the turkey body in the middle of the feather section, overtop of the turkey feet. Pin in place.



14. Place the turkey wings on top of the turkey body lining up the edges around the curve. There should be space between the turkey wings & body to place your silverware.



15. Thread your machine with brown thread & sew around the turkey body. Be mindful to catch the turkey feet & wings as you sew around the turkey body.



16. Iron the fusible web to the back of the second piece of the largest feather section using your SINGER® Iron. Peel off paper backing & fuse the wrong side of the largest feather section together.





17. Thread your machine with red thread & sew around the largest feather section to sew the two pieces together.



18. Add silverware in between the turkey feathers & place on your Thanksgiving dinner china to add an extra touch to your Thanksgiving place setting.

